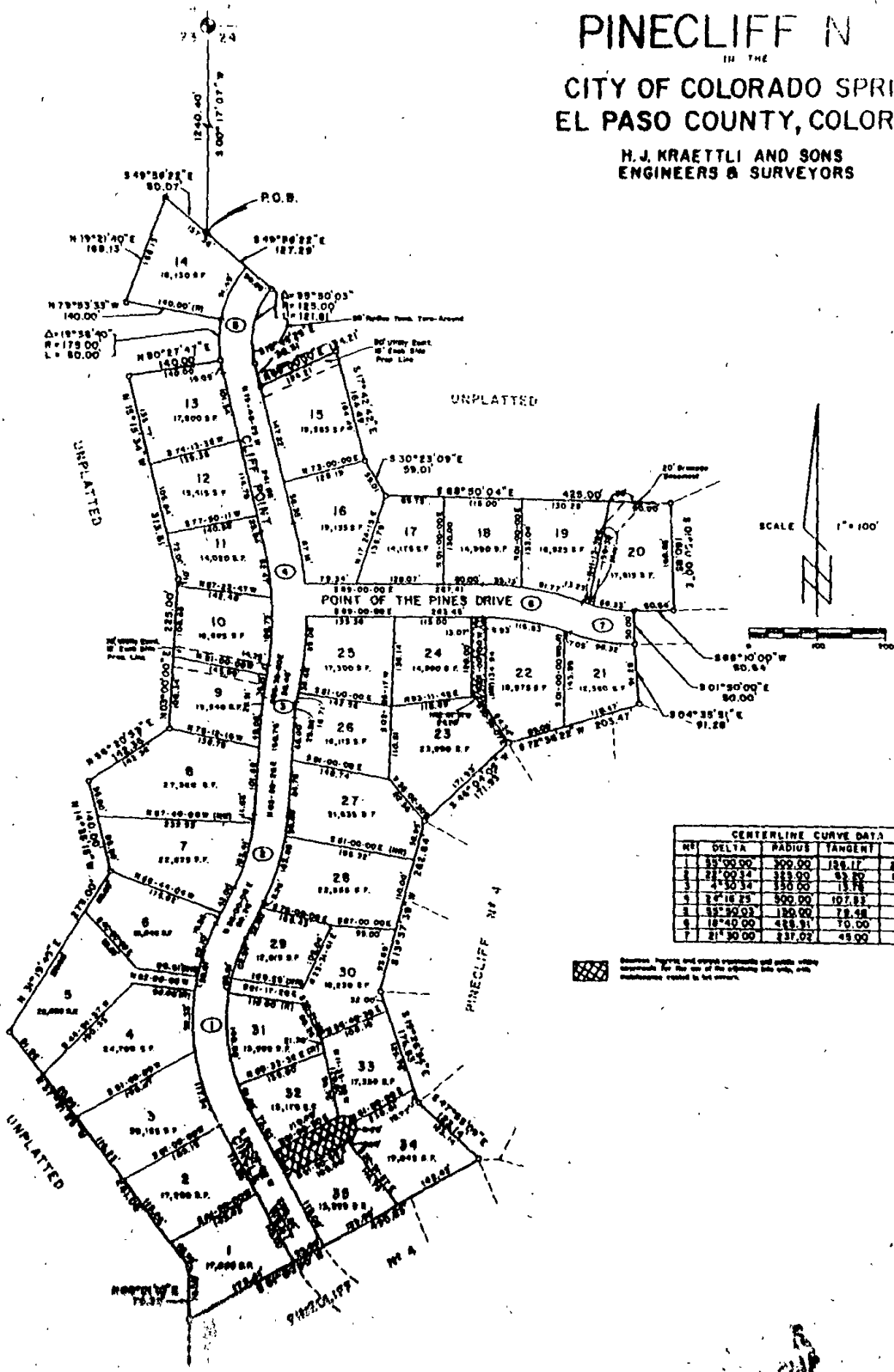


PINECLIFF N

IN THE
CITY OF COLORADO SPRING
EL PASO COUNTY, COLORADO

H. J. KRAETTLI AND SONS
ENGINEERS & SURVEYORS



CENTERLINE CURVE DATA				
NO.	DELTA	RADIUS	TANGENT	ARC
1	33°55'00"	300.00	126.17	287.28
2	22°00'34"	325.00	65.80	184.84
3	4°50'34"	150.00	13.78	87.55
4	2°18'25"	300.00	107.82	211.83
5	33°50'03"	120.00	78.28	158.17
6	18°40'00"	425.00	70.00	138.78
7	21°30'00"	237.00	45.00	98.94

Shaded, hatched, and cross-hatched areas indicate easements for the use of the adjoining lots only, and easements created in lot 29.

