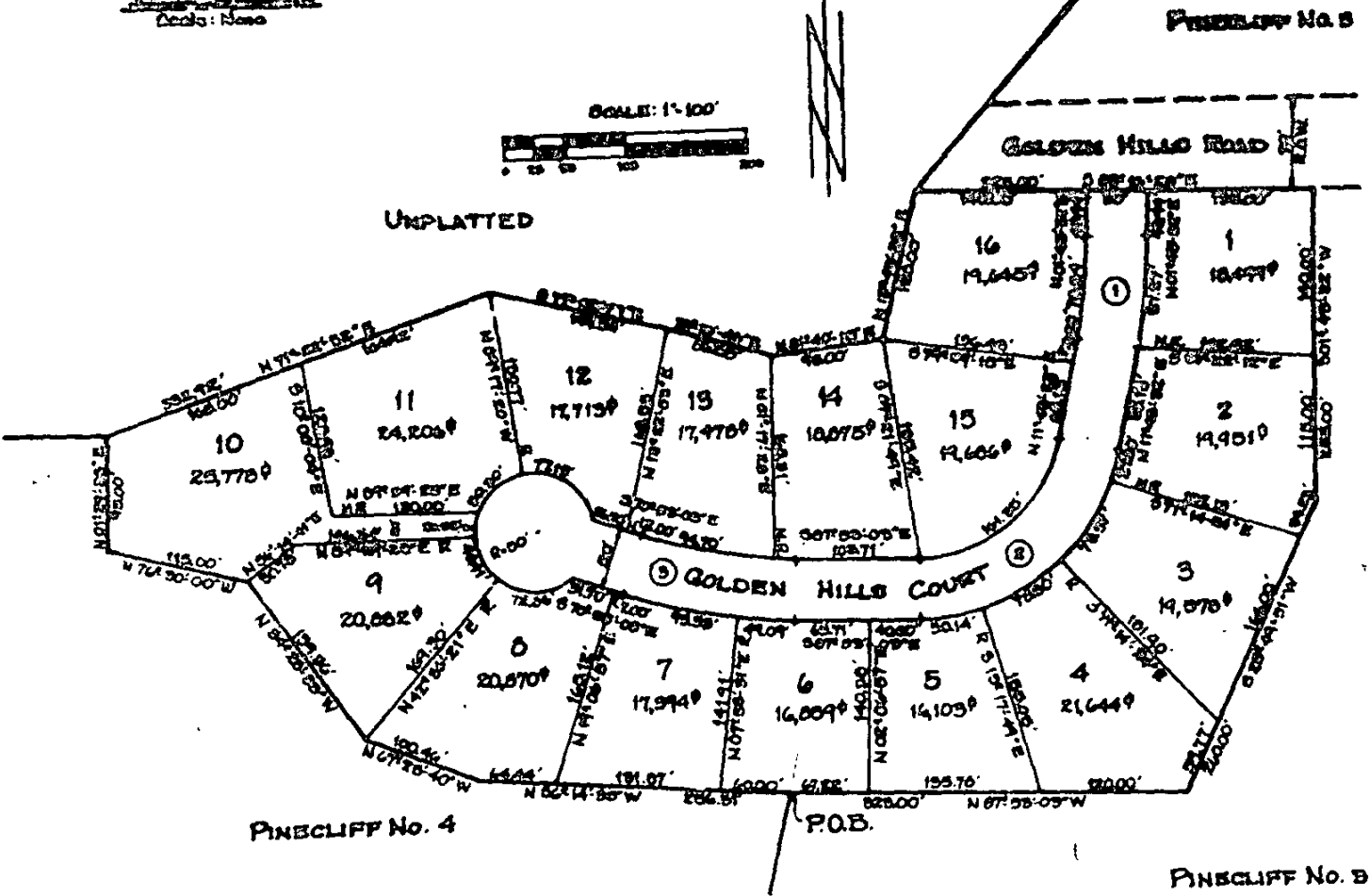


**Vicinity Map**  
Scale: None



CENTERLINE CURVE DATA				
NO.	DELTA	RADIUS	LENGTH	TANGENT
1	10°00'00"	475.00'	82.90'	41.56'
2	60°25'25"	140.00'	196.45'	118.29'
3	17°00'00"	465.00'	153.00'	66.00'

building permits shall be issued for building sites within this plat until all required fees have been paid and all required public improvements and utilities have been installed as specified by the City of Colorado Springs or, alternatively, until acceptable assurances, including but not limited to letters of credit, cash, construction bonds, or combinations thereof, guaranteeing the payment of the fees and the completion of all required public improvements and utilities have been placed on file with the City of Colorado Springs. Streets, alleys, and easements shown on this plat for access purposes are excepted from this provision.

THIS IS HEREBY GIVEN: That the area included in the plat described herein is subject to the code of the City of Colorado Springs, as amended.

NOTES: Unless shown greater in width, both sides of all side lot lines are hereby platted with a five (5) foot easement for public streets only, and both sides of all rear lot lines are hereby platted with a seven (7) foot easement for drainage purposes and public streets only, with the sole responsibility for maintenance being vested with adjacent property owners.