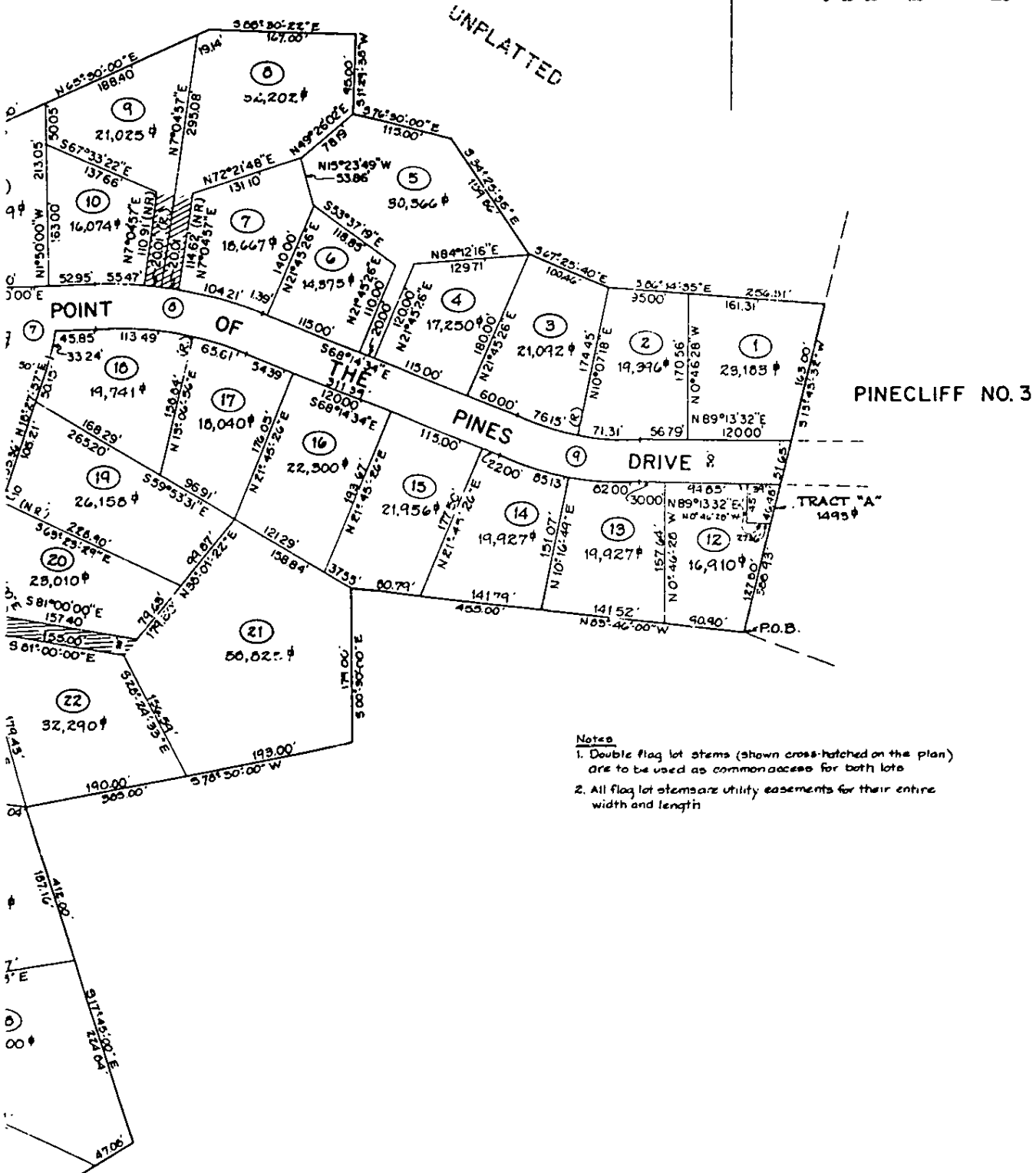
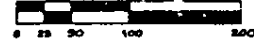


PLAT NO. 4

IN THE
**CITY OF SPRINGS, EL PASO COUNTY,
 COLORADO**

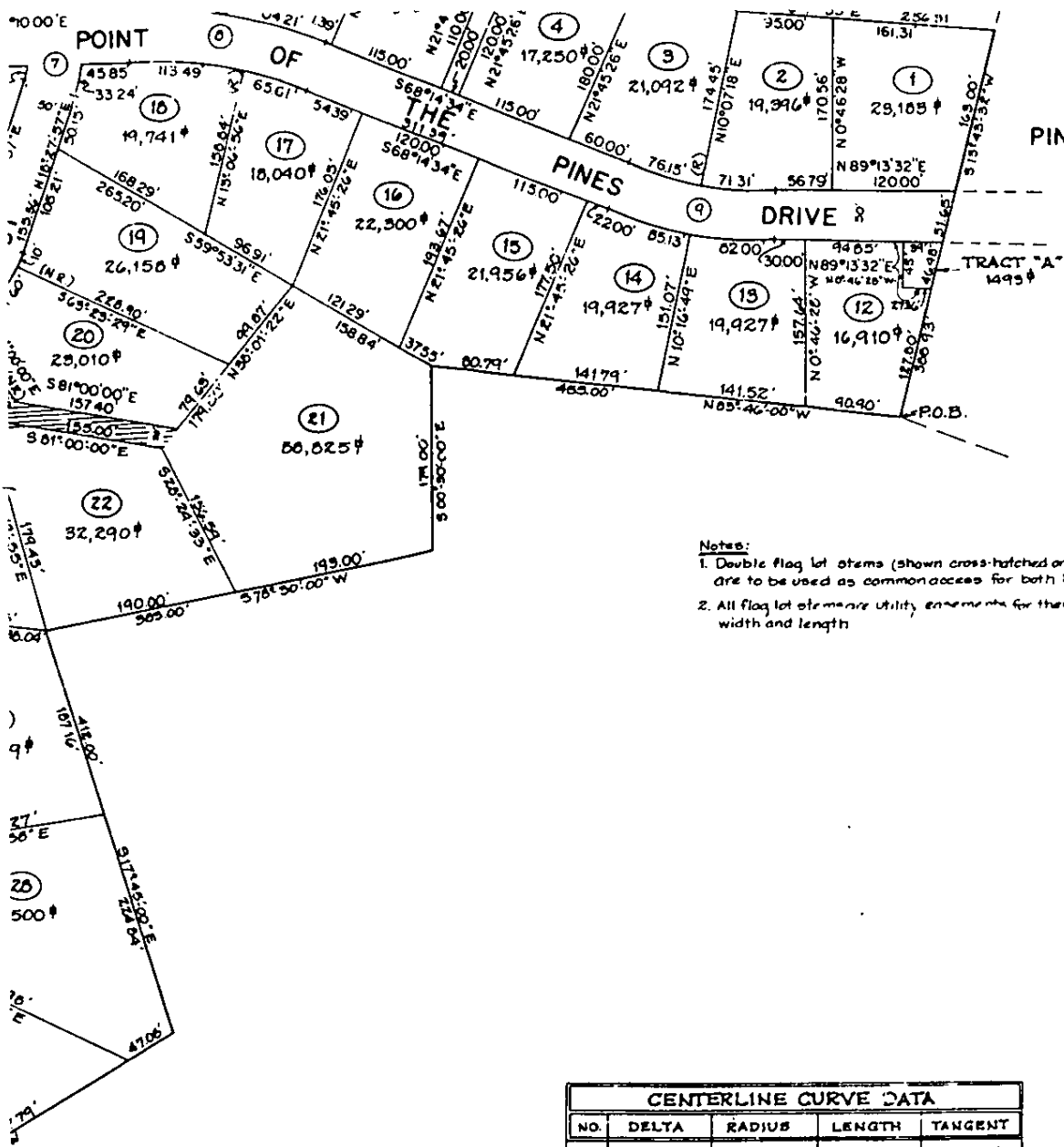
**STETTLI AND SONS
 ENGINEERS & SURVEYORS**
 MAY 3, 1979

SCALE: 1" = 100'



Notes

1. Double flag lot stems (shown cross-hatched on the plan) are to be used as common access for both lots
2. All flag lot stems are utility easements for their entire width and length



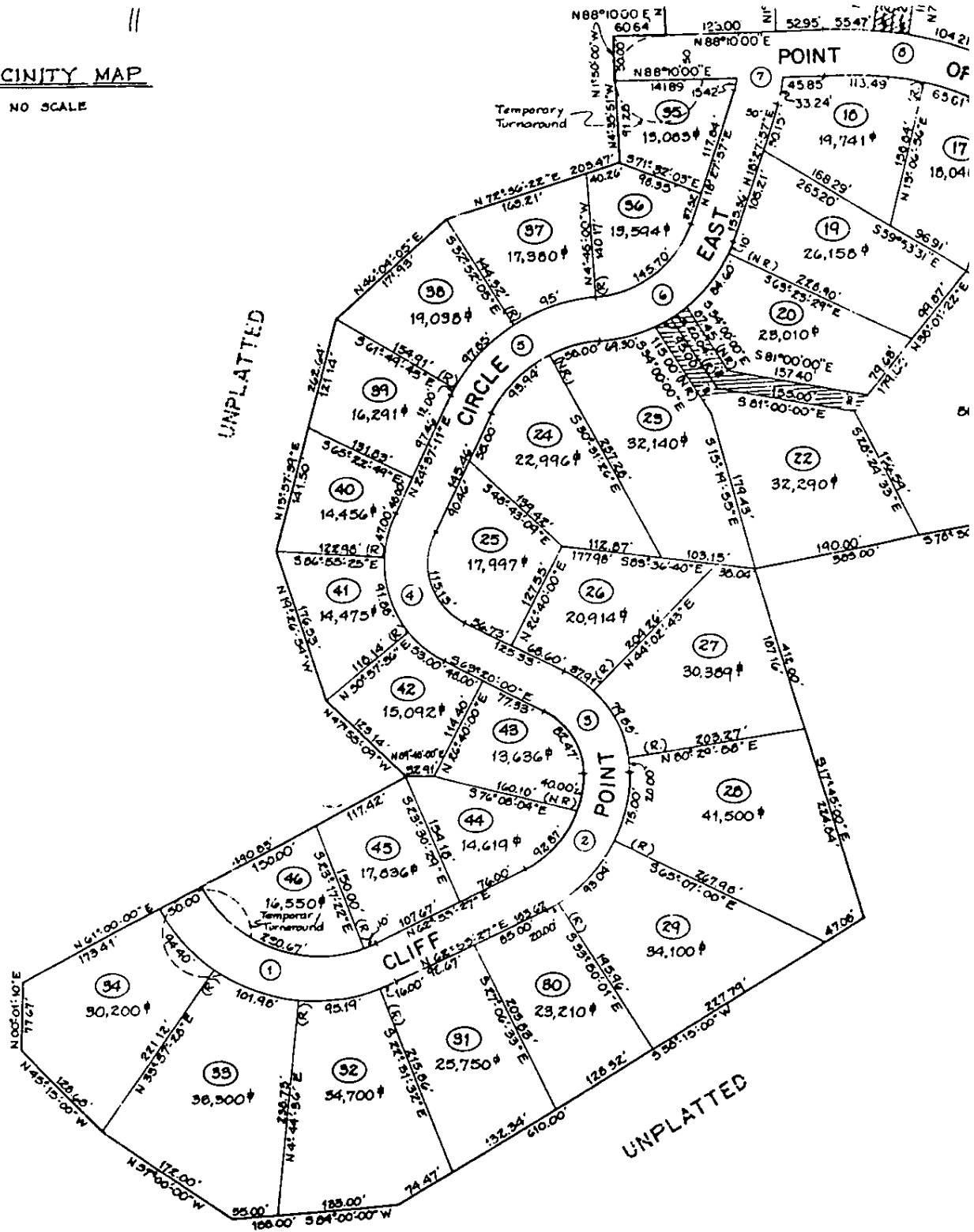
PINECLIFF NO. 3

- Notes:
1. Double flag lot items (shown cross-hatched on the plan) are to be used as common access for both lots.
 2. All flag lot items are utility easements for their entire width and length.

CENTERLINE CURVE DATA				
NO.	DELTA	RADIUS	LENGTH	TANGENT
1	88°06'-33"	175.00'	269.11'	169.32'
2	68°15'-27"	145.41'	160.46'	89.50'
3	69°00'-00"	100.00'	109.96'	61.28'
4	87°57'-11"	100.00'	153.51'	96.49'
5	60°07'-49"	168.36'	178.39'	98.57'
6	66°47'-05"	150.00'	174.84'	98.68'
7	20°17'-57"	189.65'	49.48'	25.00'
8	29°55'-26"	460.00'	189.40'	96.06'
9	22°51'-54"	400.00'	157.80'	79.68'

VICINITY MAP

NO SCALE

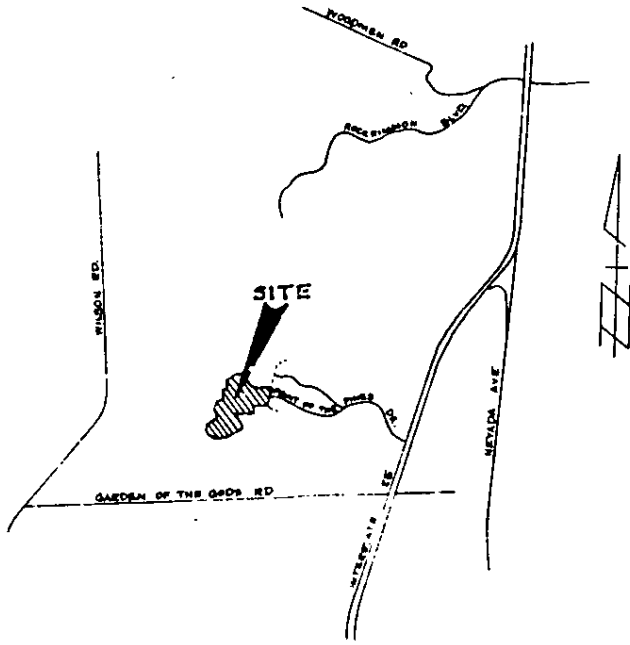


CRB

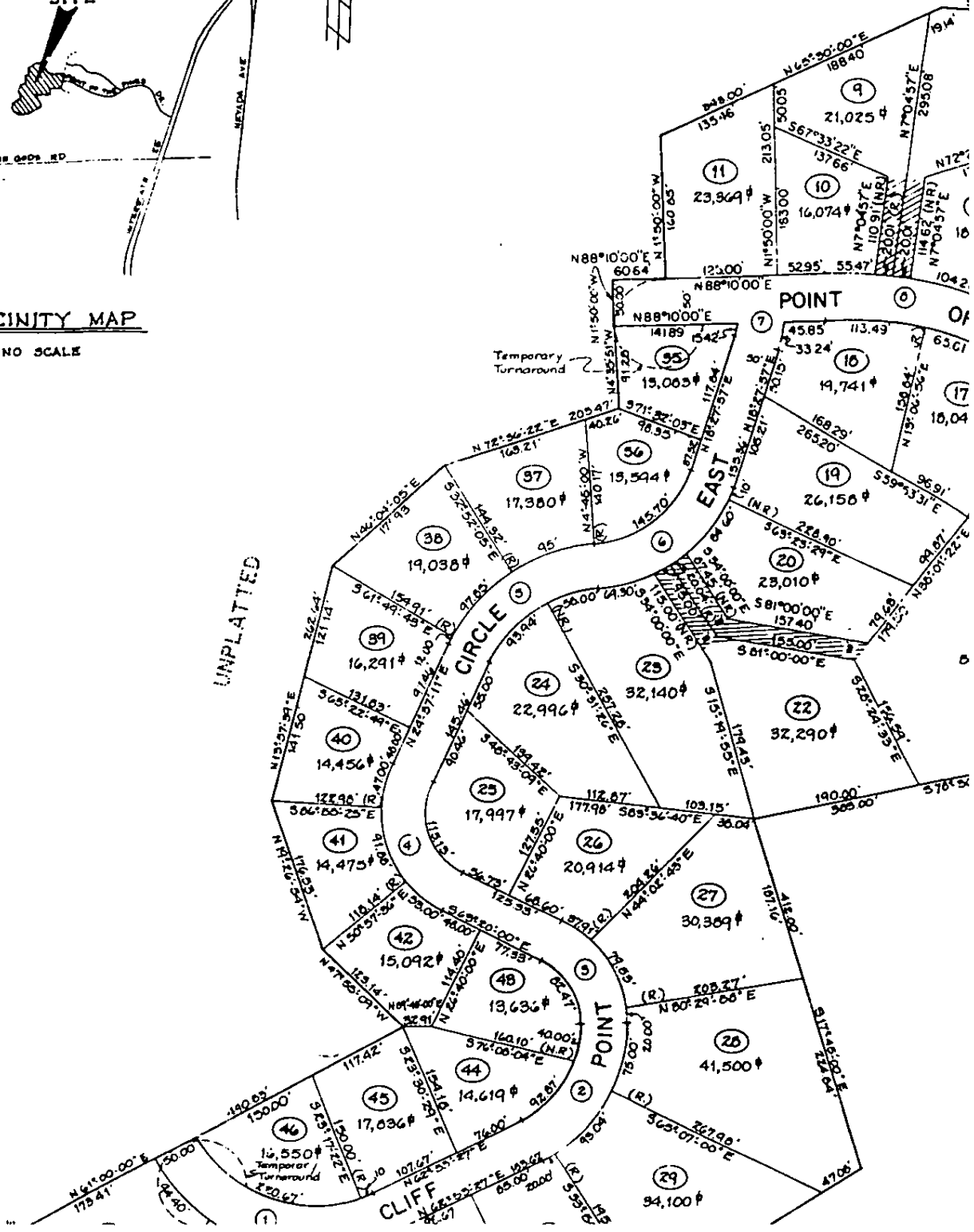
PINECLIFF NO.

IN THE
CITY OF COLORADO SPRINGS, EL PASO
COLORADO

H.J. KRAETTLI AND SONS
ENGINEERS & SURVEYORS
MAY 3, 1979



VICINITY MAP
NO SCALE



JKB